

Introduction to ANZMet Lite metadata entry tool

quickStart1



ANZLIC
the Spatial Information Council

The ANZMet Lite metadata entry tool
remains the intellectual property of the
Commonwealth of Australia.

This presentation is licensed under:



Downloading and installing



ANZMetLiteSetup-1.0.zip
2,949 KB

1. Download the zip file from the ANZLIC website

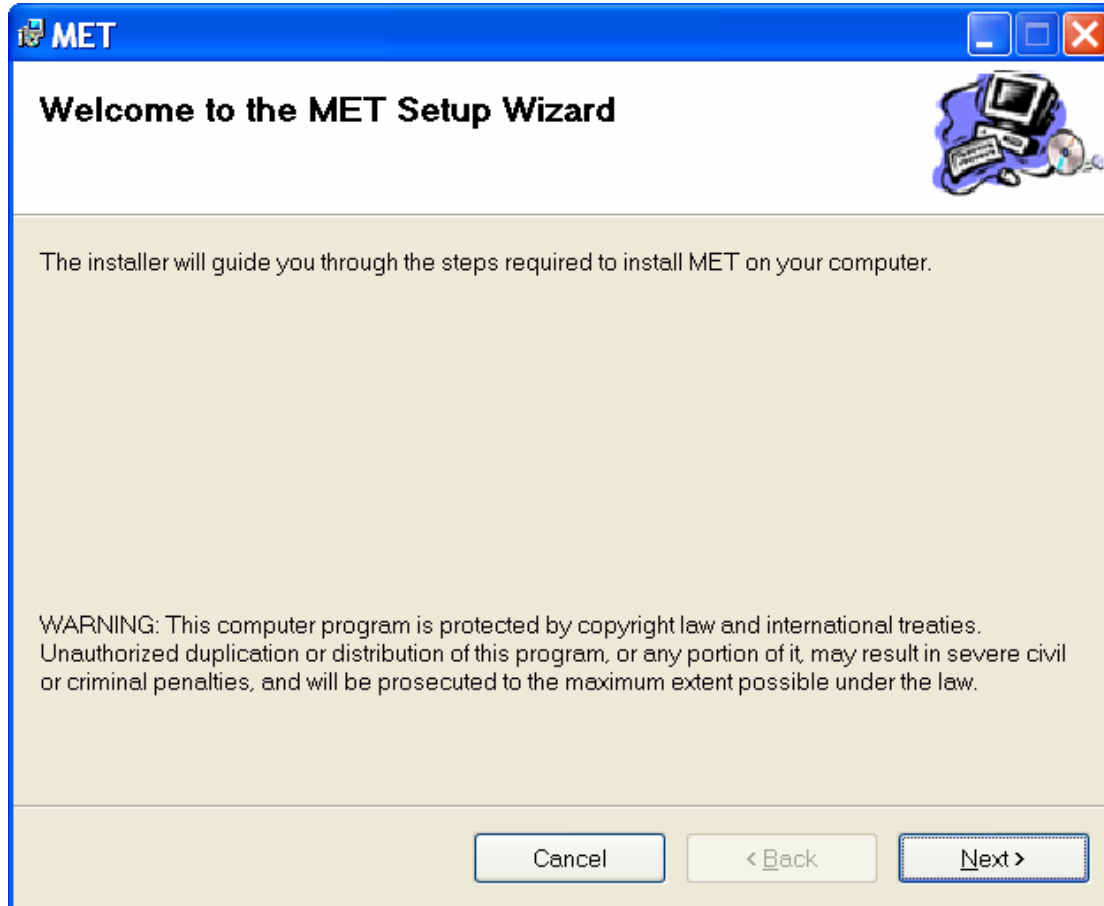
2. Unpack the zip file and open (double-click) the Setup package



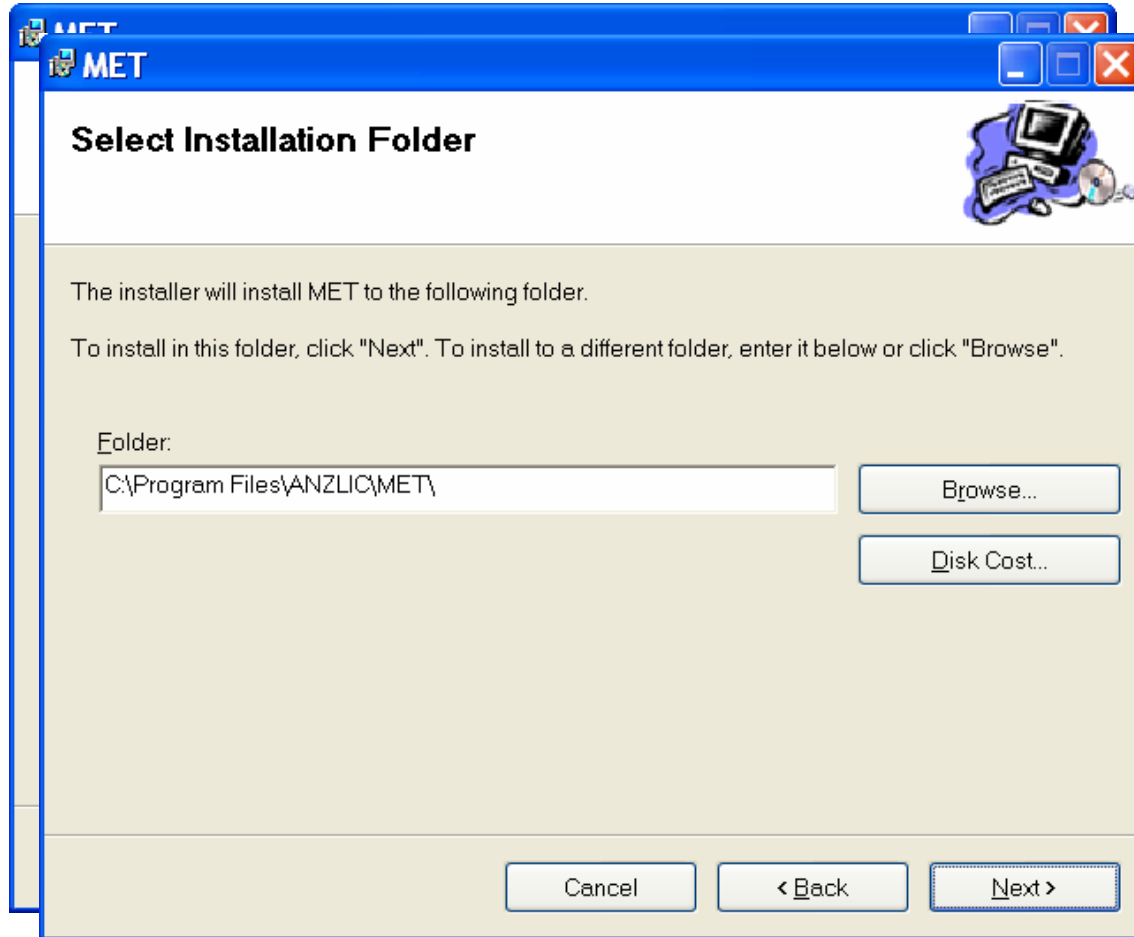
ANZMetLiteSetup-1.0.msi
Windows Installer Package
3,241 KB

The following series of screens will take you through the installation process:

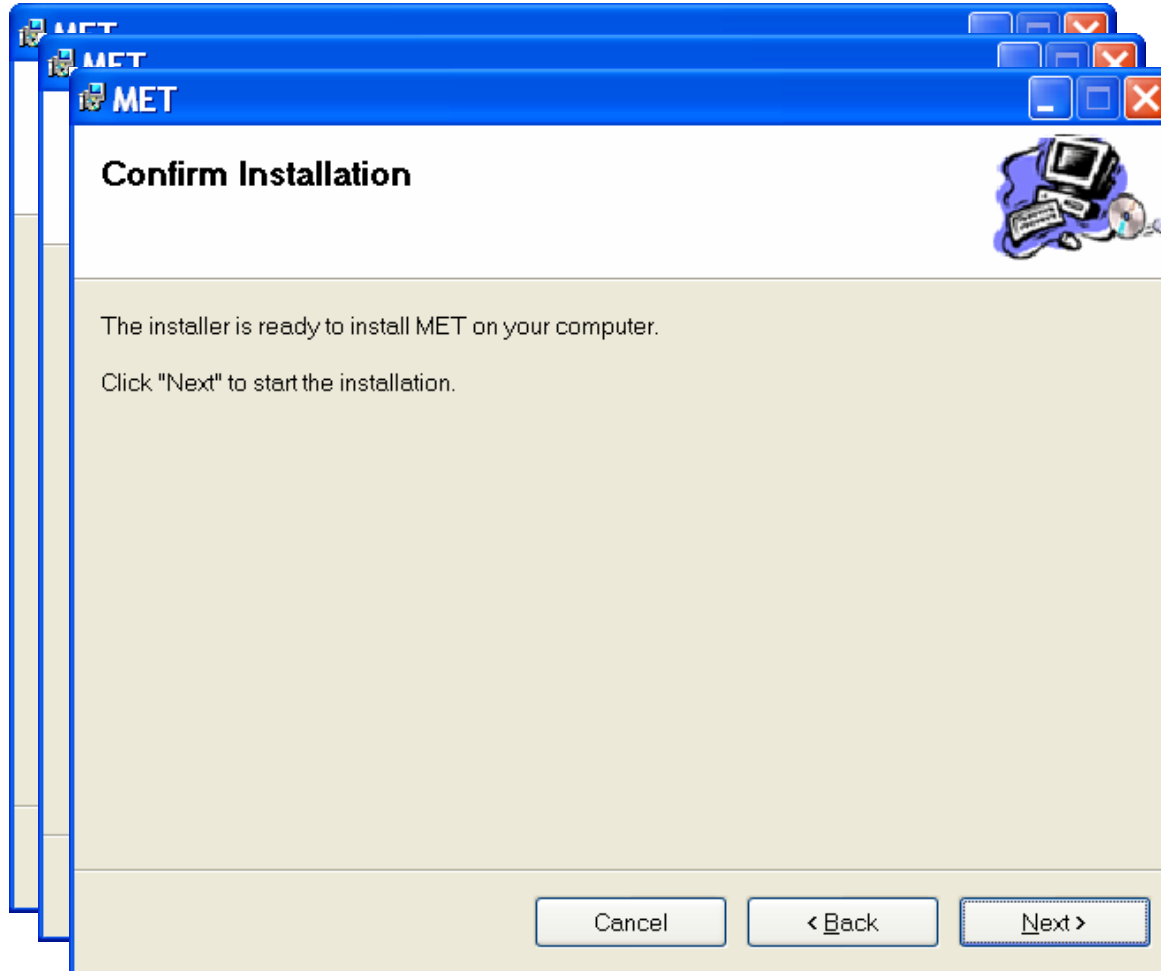
Downloading and installing



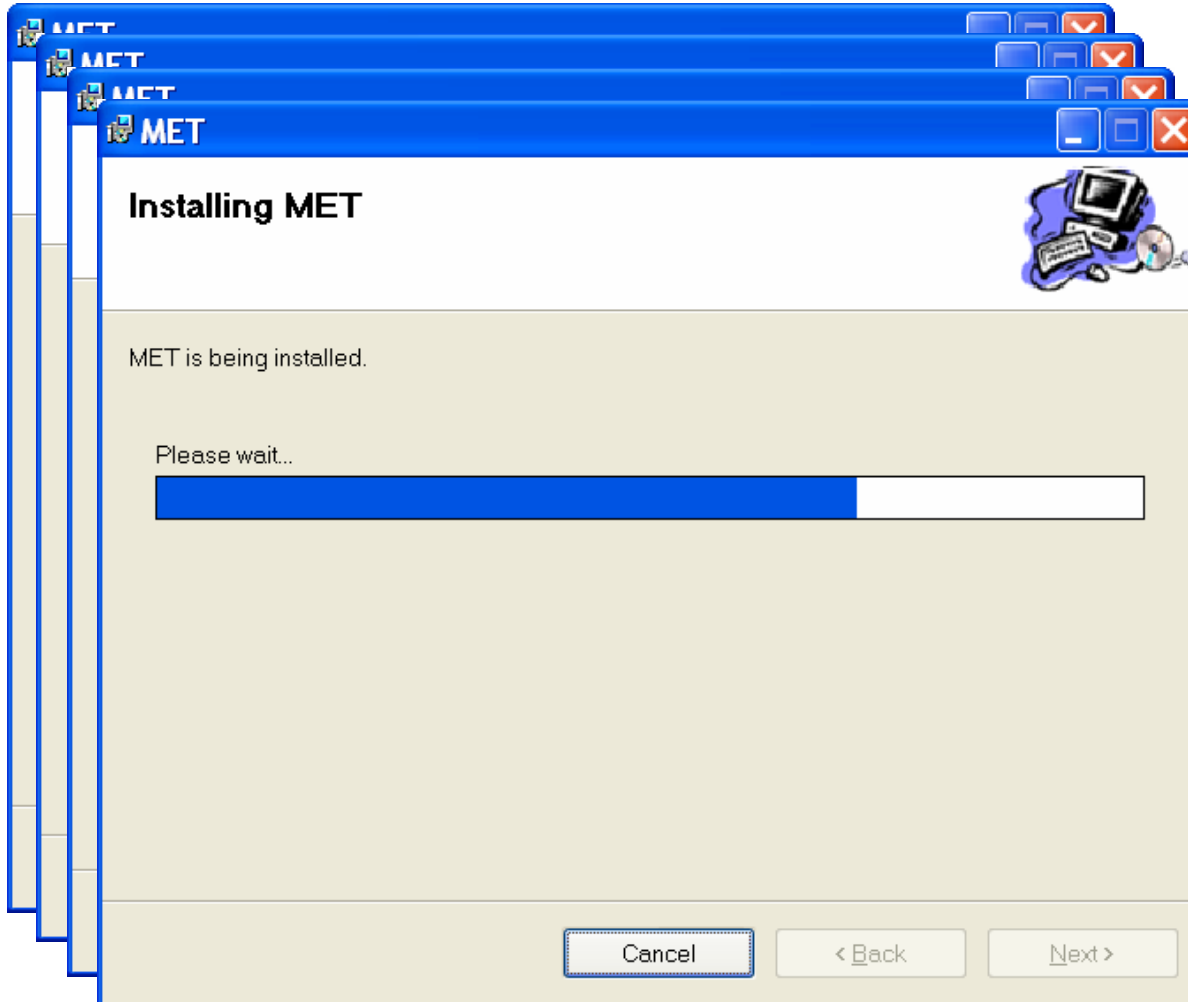
Downloading and installing



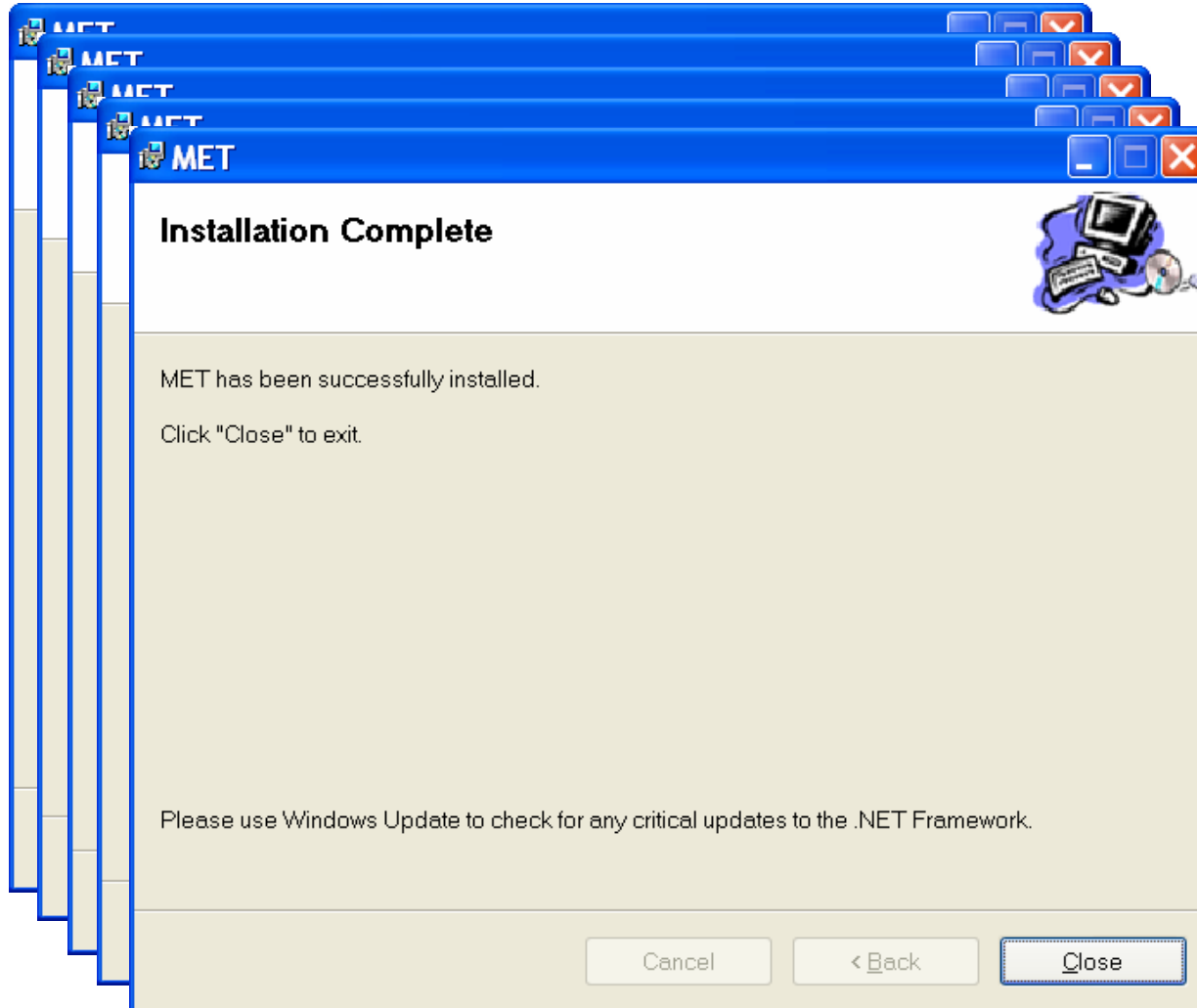
Downloading and installing



Downloading and installing



Downloading and installing



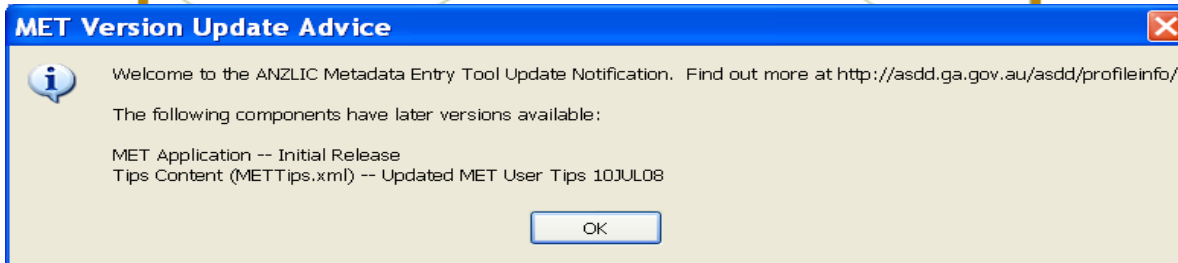


Opening the program



ANZMet Lite

When you first open ANZMet Lite using the desktop icon you will see the following message:





Opening the program



ANZMet Lite

When you first open ANZMet Lite using the desktop icon you will see the following message:



MET Version Update Advice



Welcome to the ANZLIC Metadata Entry Tool Update Notification. Find out more at <http://asdd.ga.gov.au/asdd/profileinfo/>

The following components have later versions available:

MET Application -- Initial Release
Tips Content (METTips.xml) -- Updated MET User Tips 10JUL08

OK

MET Version Update Advice

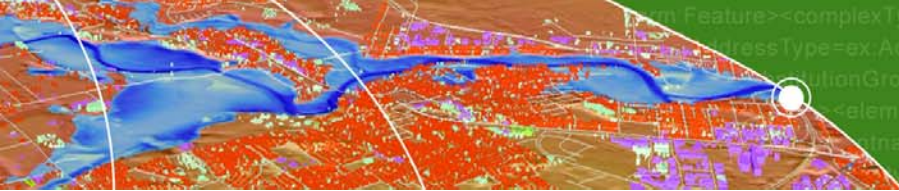


Welcome to the ANZLIC Metadata Entry Tool Update Notification. Find out more at <http://asdd.ga.gov.au/asdd/profileinfo/>

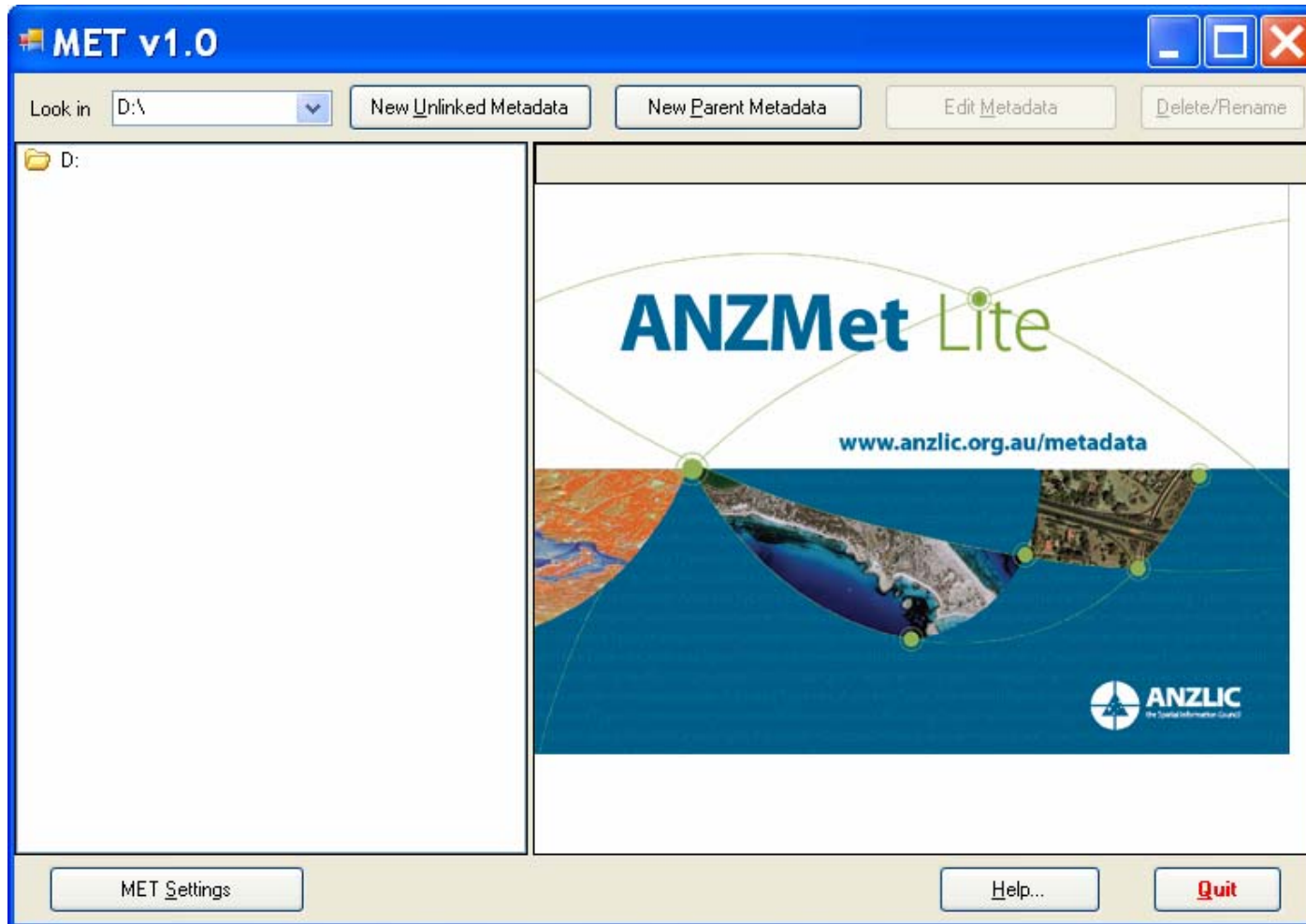
No components require update

OK

The program will also attempt to access the internet for updates but if it cannot, this will not effect the running of the program.

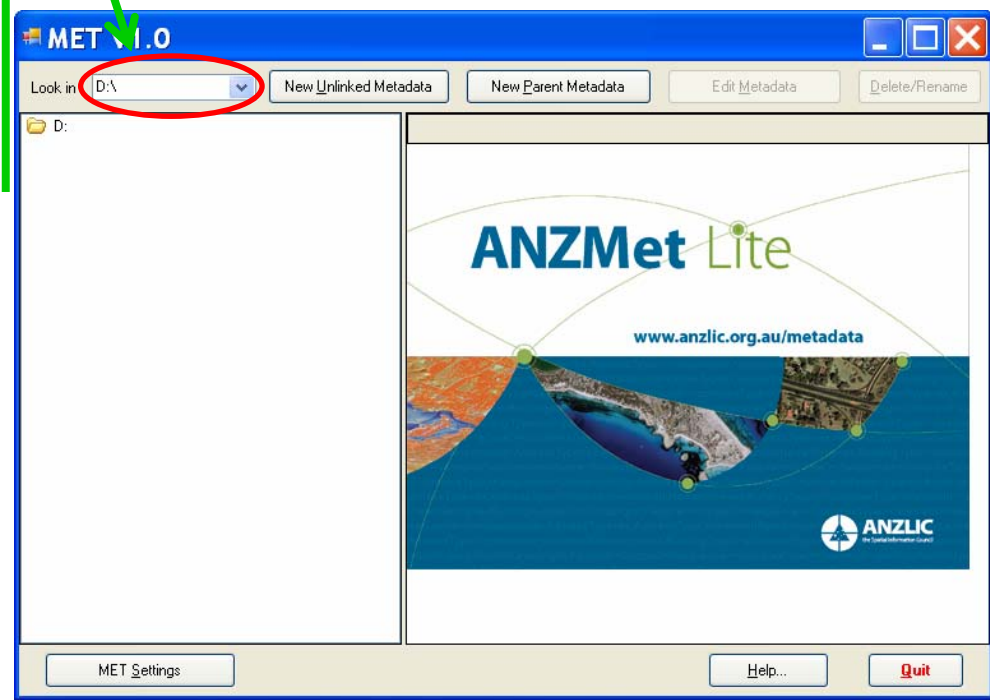


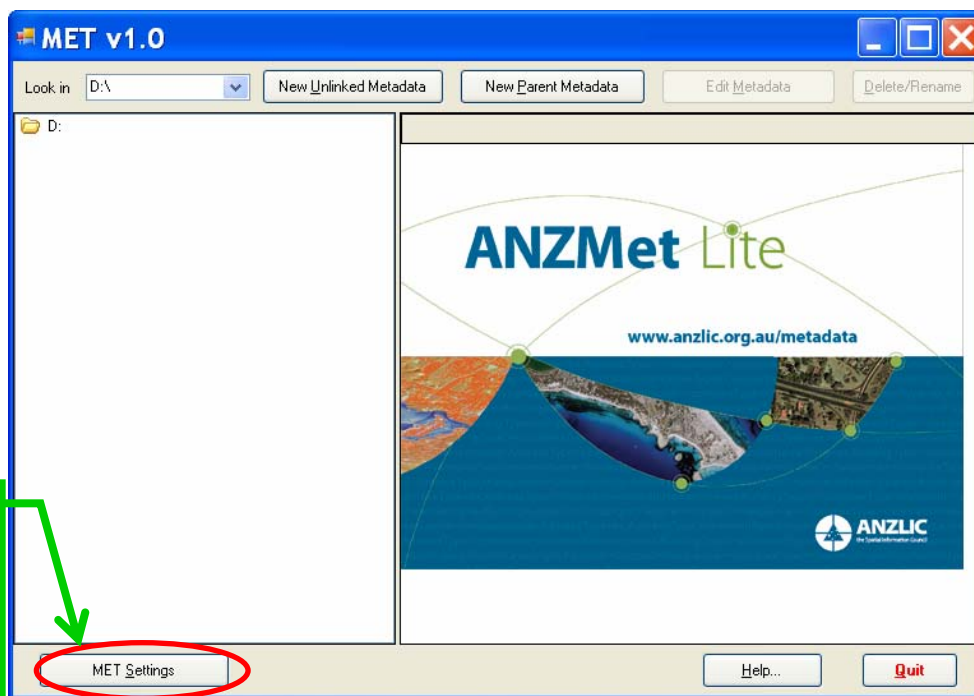
The first screen:



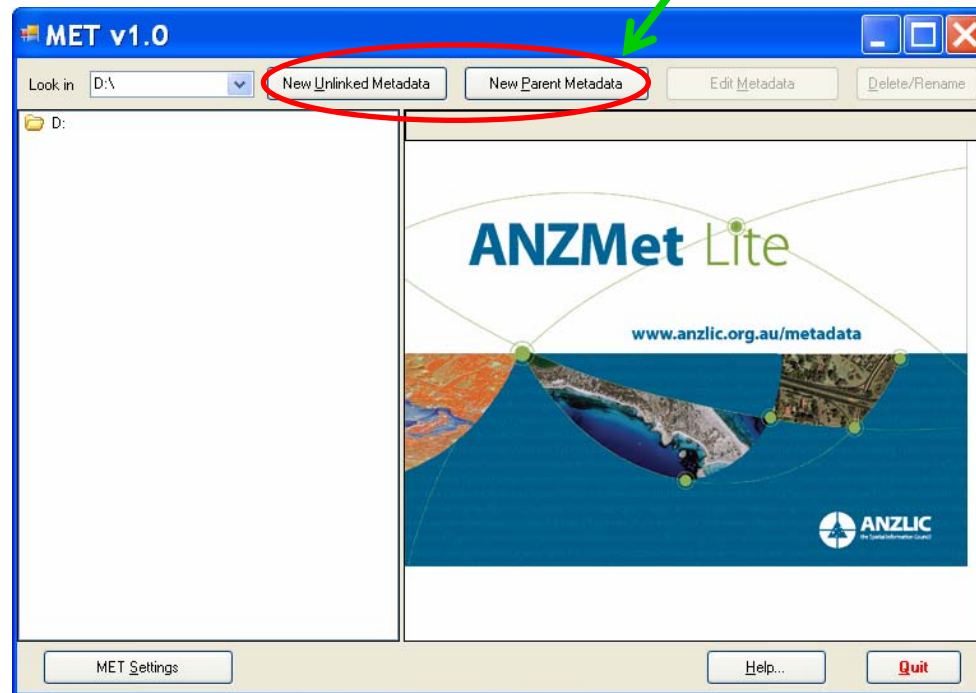


Browse here or in the folders shown below to find the resource you wish to create metadata for

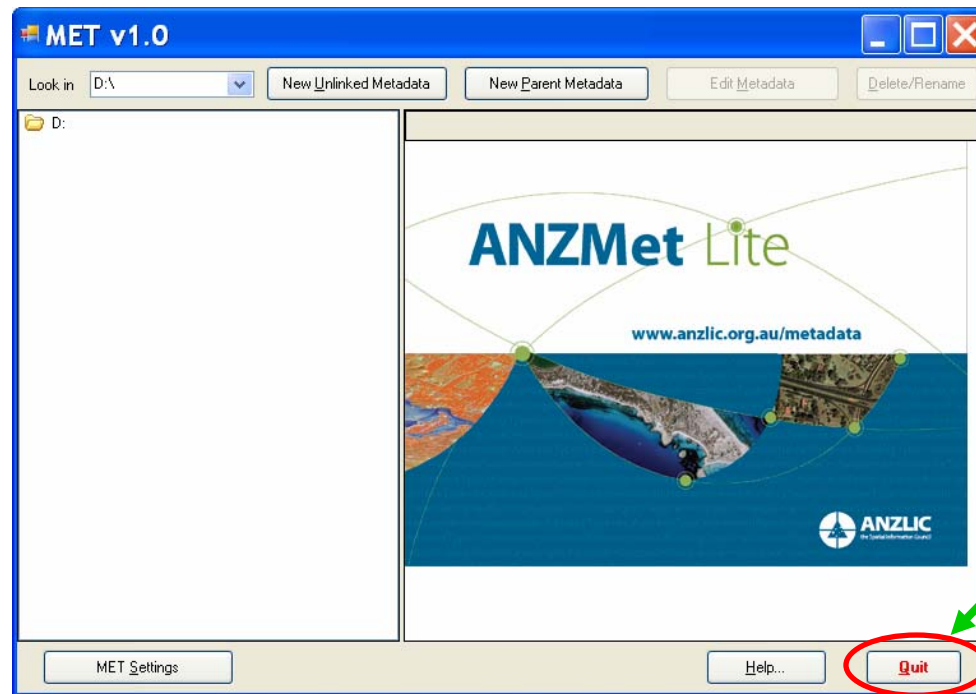




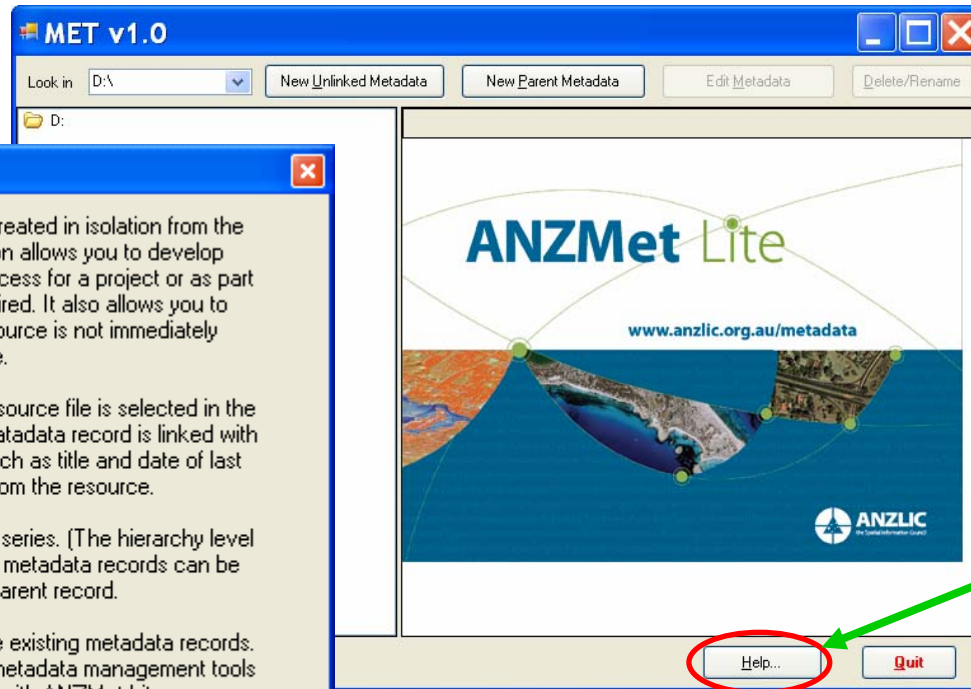
Before you begin creating metadata files, you need to check MET Settings



If you don't yet have the resource, you select Unlinked. Parent Metadata describes the general metadata for a "group" of resources.



This button will close the program without saving any entered information



MET Tip

Unlinked Metadata is metadata created in isolation from the resource it describes. This option allows you to develop metadata as part of the design process for a project or as part of the specification of data required. It also allows you to create metadata when the resource is not immediately available.

Linked Metadata requires that a resource file is selected in the Explorer view and the resulting metadata record is linked with the resource. Some metadata, such as title and date of last update will be derived from the resource.

Parent Metadata is metadata for a series. (The hierarchy level will be set to series.) Subsequent metadata records can be linked back to this Parent record.

Edit Metadata allows you to update existing metadata records. NOTE records created with other metadata management tools SHOULD NOT be edited with ANZMet Lite.

Delete/Rename allows you to manage existing records.

The User Guide describes the function of each button in more detail.

This will bring up a screen giving explanations of the available buttons.

MET Settings

MET Settings

This is the list of filename extensions for which MET will allow entry of metadata. They must be entered one per line, without the dot.

- ascii
- csv
- dbf
- dgn
- dwg
- dx
- e00
- ecw
- img
- shp
- bmp
- doc
- jpg

Create metadata for an Australian Government organization

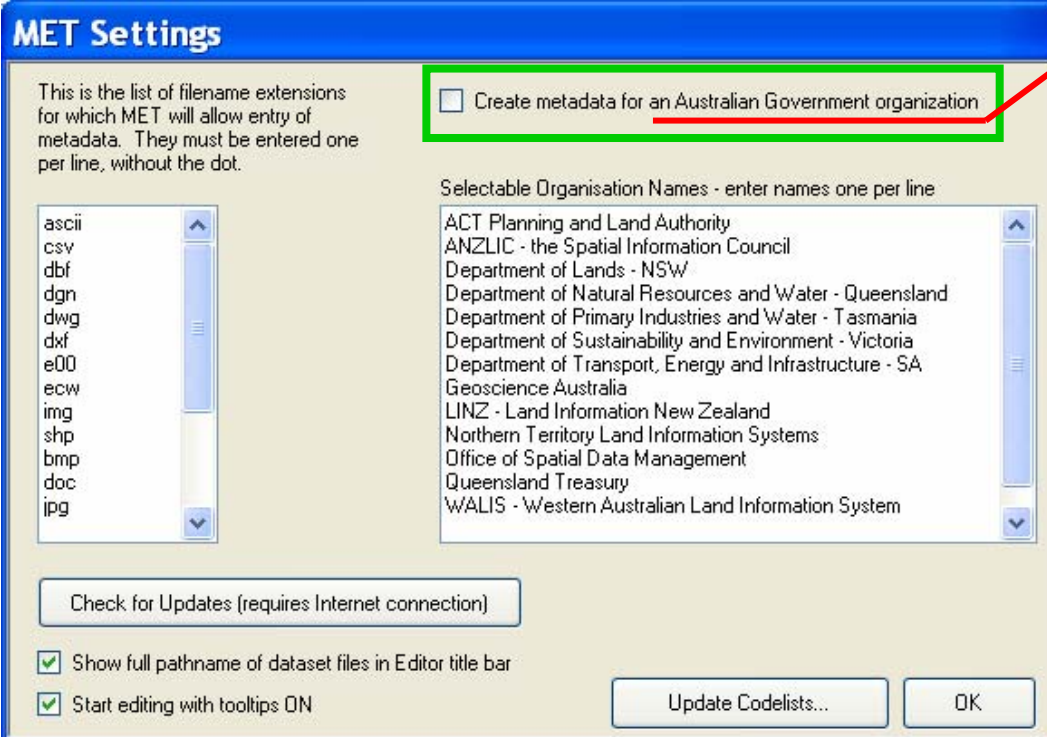
Selectable Organisation Names - enter names one per line

- ACT Planning and Land Authority
- ANZLIC - the Spatial Information Council
- Department of Lands - NSW
- Department of Natural Resources and Water - Queensland
- Department of Primary Industries and Water - Tasmania
- Department of Sustainability and Environment - Victoria
- Department of Transport, Energy and Infrastructure - SA
- Geoscience Australia
- LINZ - Land Information New Zealand
- Northern Territory Land Information Systems
- Office of Spatial Data Management
- Queensland Treasury
- WALIS - Western Australian Land Information System

Show full pathname of dataset files in Editor title bar

Start editing with tooltips ON

MET Settings



MET Settings

This is the list of filename extensions for which MET will allow entry of metadata. They must be entered one per line, without the dot.

- ascii
- csv
- dbf
- dgn
- dwg
- dxf
- e00
- ecw
- img
- shp
- bmp
- doc
- jpg

Create metadata for an Australian Government organization

Selectable Organisation Names - enter names one per line

- ACT Planning and Land Authority
- ANZLIC - the Spatial Information Council
- Department of Lands - NSW
- Department of Natural Resources and Water - Queensland
- Department of Primary Industries and Water - Tasmania
- Department of Sustainability and Environment - Victoria
- Department of Transport, Energy and Infrastructure - SA
- Geoscience Australia
- LINZ - Land Information New Zealand
- Northern Territory Land Information Systems
- Office of Spatial Data Management
- Queensland Treasury
- WALIS - Western Australian Land Information System

Check for Updates (requires Internet connection)

- Show full pathname of dataset files in Editor title bar
- Start editing with tooltips ON

Update Codelists... OK

Should only be checked if you are an Australian Government Organisation as this will add another mandatory element that is not relevant otherwise.

MET Settings

MET Settings

This is the list of filename extensions for which MET will allow entry of metadata. They must be entered one per line, without the dot.

Create metadata for an Australian Government organization

Selectable Organisation Names - enter names one per line

- ACT Planning and Land Authority
- ANZLIC - the Spatial Information Council
- Department of Lands - NSW
- Department of Natural Resources and Water - Queensland
- Department of Primary Industries and Water - Tasmania
- Department of Sustainability and Environment - Victoria
- Department of Transport, Energy and Infrastructure - SA
- Geoscience Australia
- LINZ - Land Information New Zealand
- Northern Territory Land Information Systems
- Office of Spatial Data Management
- Queensland Treasury
- WALIS - Western Australian Land Information System

Check for Updates (requires Internet connection)

Show full pathname of dataset files in Editor title bar

Start editing with tooltips ON

Update Codelists... OK

MET Settings

MET Settings

This is the list of filename extensions for which MET will allow entry of metadata. They must be entered one per line, without the dot.

Create metadata for an Australian Government organization

Selectable Organisation Names - enter names one per line

ascii
csv
dbf
dgn
dwg
dxf
e00
ecw
img
shp
bmp
doc
jpg

ACT Planning and Land Authority
ANZLIC - the Spatial Information Council
Department of Lands - NSW
Department of Natural Resources and Water - Queensland
Department of Primary Industries and Water - Tasmania
Department of Sustainability and Environment - Victoria
Department of Transport, Energy and Infrastructure - SA
Geoscience Australia
LINZ - Land Information New Zealand
Northern Territory Land Information Systems
Office of Spatial Data Management
Queensland Treasury
WALIS - Western Australian Land Information System

Check for Updates (requires Internet connection)

Show full pathname of dataset files in Editor title bar
 Start editing with tooltips ON

Update Codelists... OK

If you Update Codelists...

Codelist Update

NOTE: Codelists for update must have been downloaded from ASDD and unzipped if necessary. You MUST be certain this has happened correctly, as replacement of a codelist with an incomplete or incorrect one can make the MET unusable.

Codelist to Update

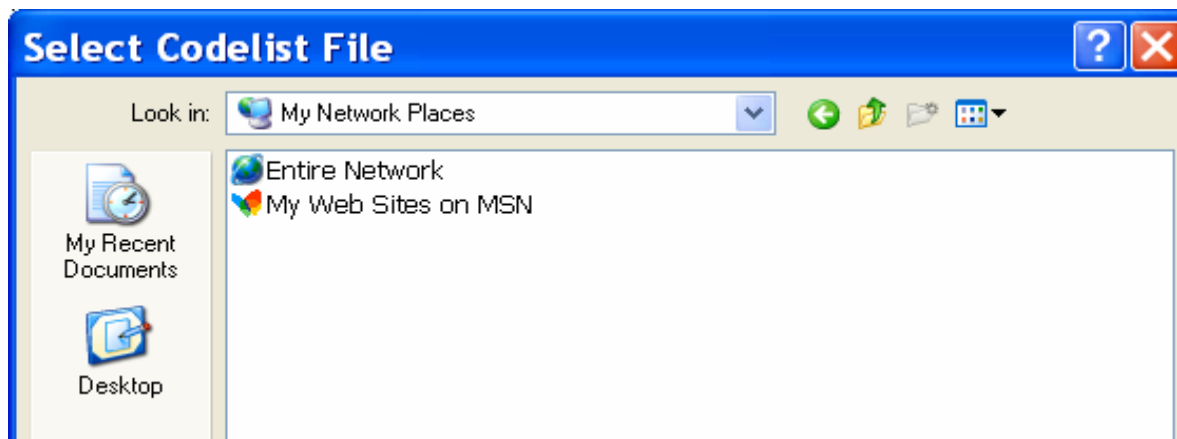
- ANZLIC Geographic Extent Names (anzlic-allgens.xml)
- ANZLIC Search Words (anzlic-theme.xml)
- ANZLIC Jurisdictions (anzlic-jurisdic.xml)
- Coordinate Reference Systems (anzlic-gmxCRS.xml)
- Tips Content List (METtips.xml)

Select File to Update From...

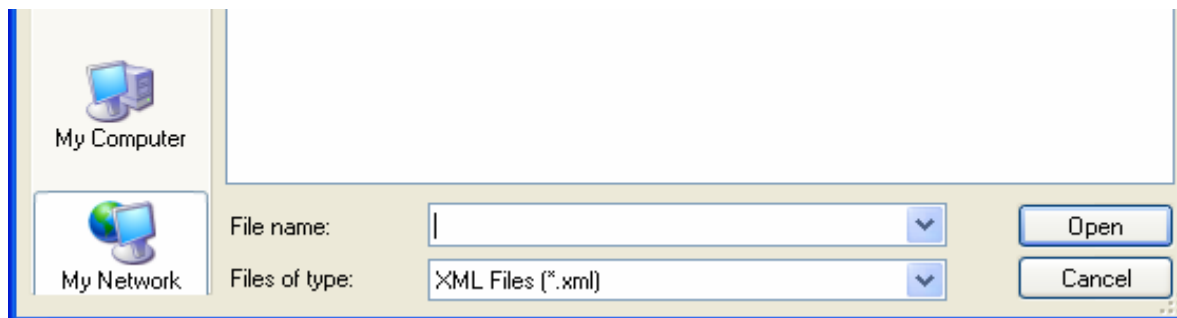
Update Cancel

If you **Select File to Update From...**

NOTE: Codelists for update must have been downloaded from ASDD and unzipped if necessary. You **MUST** be certain this has happened correctly, as replacement of a codelist with an incomplete or incorrect one can make the MET unusable.



http://www.anzlic.org.au/infrastructure_GENfiles.html





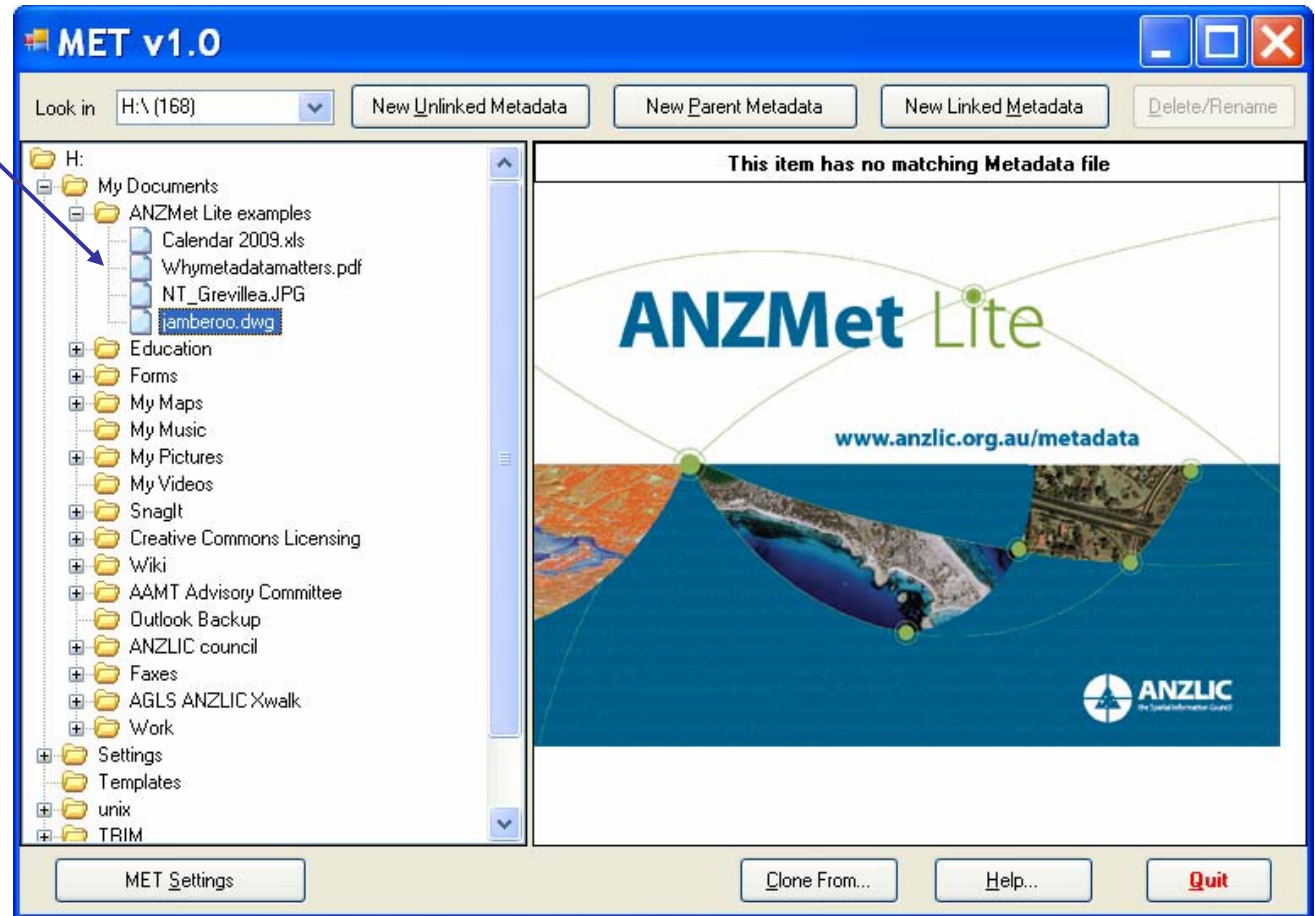
http://www.anzlic.org.au/infrastructure_GENfiles.html

GEN category files

GEN Category	Content	GEN List	Metadata	Last update
Australia	Australia excluding external territories; Australia including external territories	 Records: 2 Size: 1 KB		29/08/01
State or Territory	The six States and two Territories	 Records: 8 Size: 1 KB		29/08/01
External Territories	The seven official external territories administered by Australia	 Records: 7 Size: 1 KB		29/08/01
1:1 000 000 Map Series	Topographic map series produced by Geoscience Australia	 Records: 64 Size: 3 KB		29/08/01
1:250 000 Map Series	Standard topographic map series produced by Geoscience Australia	 Records: 634 Size: 35 KB		19/09/03
	Special/adjusted topographic map series produced by Geoscience Australia	 Records: 51 Size: 4 KB		19/09/03
1:100 000 Map Series	Standard topographic map series produced by Geoscience Australia	 Records: 3057 Size: 178 KB		19/09/03
	Special/adjusted topographic map series produced by Geoscience Australia	 Records: 4 Size: 1 KB		19/09/03

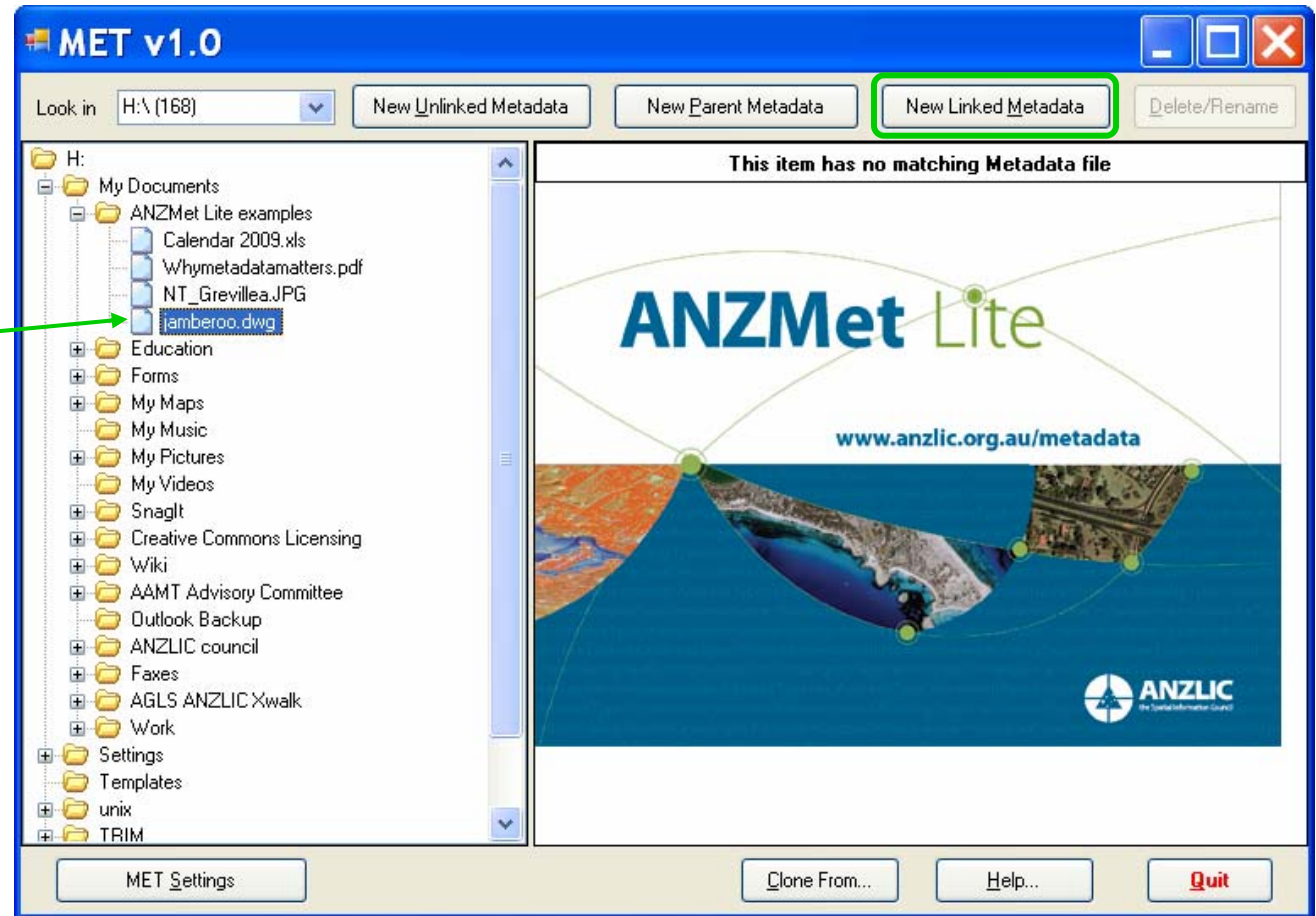
Your options for creating metadata (1)

Locate the resource you want to describe



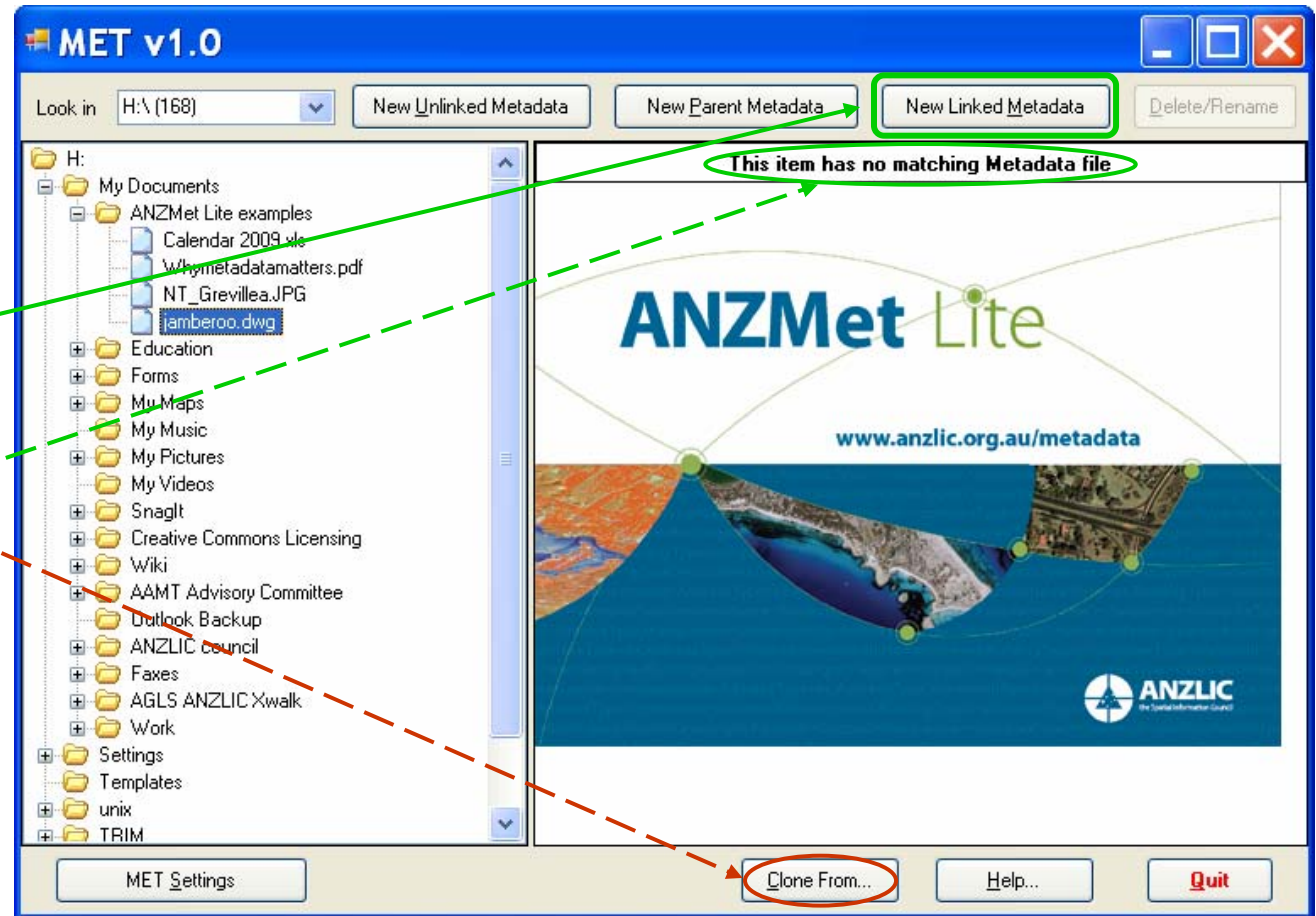
Your options for creating metadata (1)

When a resource is selected, new options appear

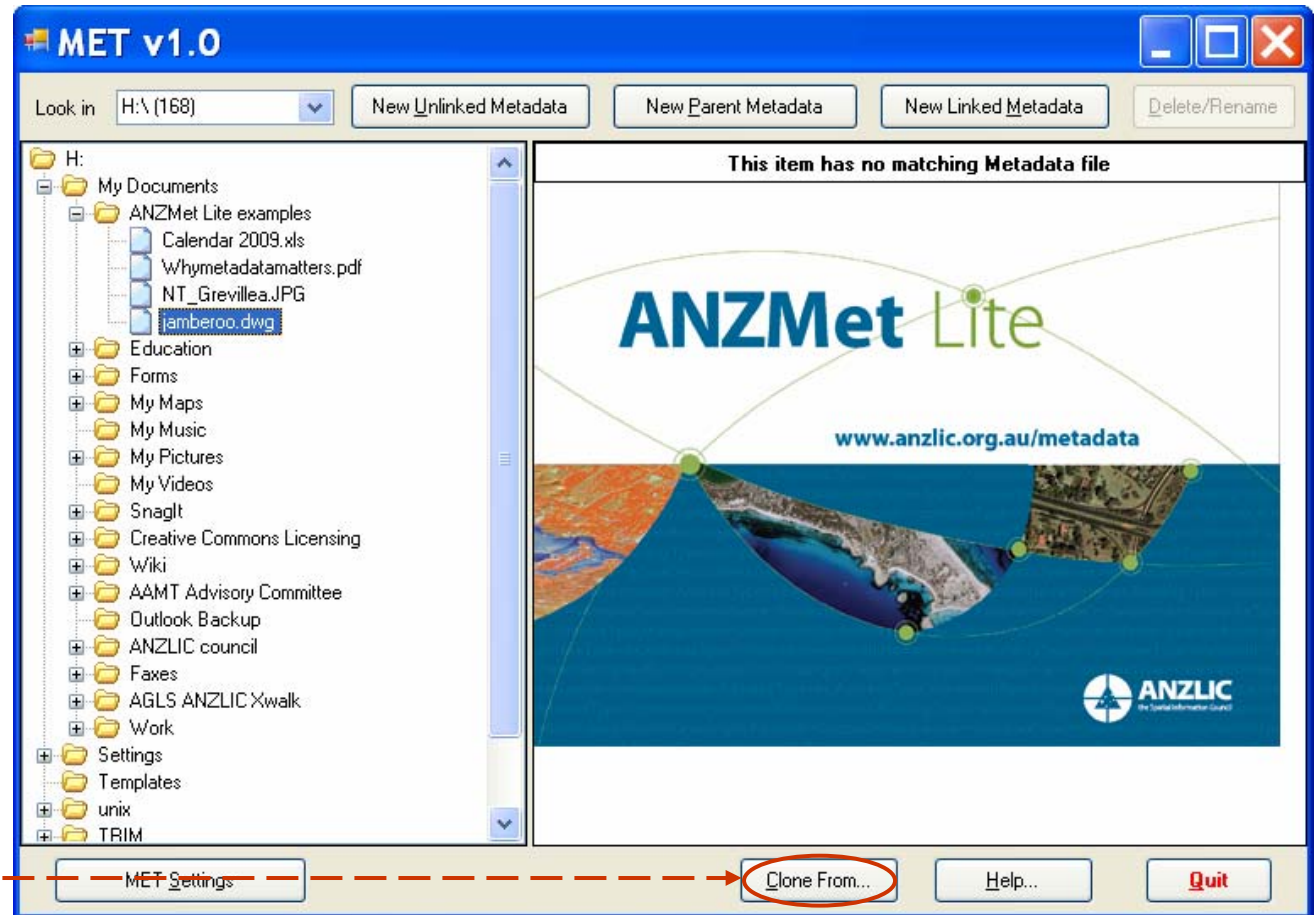


Your options for creating metadata (1)

When a resource is selected, new options appear



Your options for creating metadata (1)



Clone From... if you select a previously created metadata record the information is copied to the new record, which you can then edit.



New Linked Metadata file


After you select New Linked Metadata, the property screen opens...

MET v1.0 [H:\My Documents\ANZMet Lite examples\jamb...

Dataset properties

- About the MET
- General Information**
 - Title
 - Key dates and language
 - Abstract and purpose
 - Metadata author
 - Contacts and recognition
- History and Quality
 - History
- Identification
 - Jurisdictions/search words
 - Topic category
 - Status and maintenance
 - Reference system 1
 - Scale 1
 - Spatial representation type 1
 - Security restrictions
 - Legal restrictions
 - Embargoes
- Extent
 - Extent Information
 - Additional extent information
- Distribution
 - Distributor 1
- Summary

ANZMet Lite

Resource File: 

Is the resource part of a package or a series?

- No
- Yes, as the Parent of a group of other metadata files
- Yes, as one of a group attached to a Parent

Parent Metadata File Identifier:

Hierarchy Level:

Hierarchy Level Name:



New Linked Metadata file

You can now
begin to create
metadata!

MET v1.0 [H:\My Documents\ANZMet Lite examples\jamb...]

Dataset properties

- About the MET
- General Information**
 - Title
 - Key dates and language
 - Abstract and purpose
 - Metadata author
 - Contacts and recognition
- History and Quality**
 - History
- Identification**
 - Jurisdictions/search words
 - Topic category
 - Status and maintenance
 - Reference system 1
 - Scale 1
 - Spatial representation type 1
 - Security restrictions
 - Legal restrictions
 - Embargoes
- Extent**
 - Extent Information
 - Additional extent information
- Distribution**
 - Distributor 1
- Summary**

ANZMet Lite

Resource File: jamberoo.dwg

Is the resource part of a package or a series?

- No
- Yes, as the Parent of a group of other metadata files
- Yes, as one of a group attached to a Parent

Parent Metadata File Identifier: [] Browse...

Hierarchy Level: attribute, attributeType, collectionHardware, collectionSession, **dataset**, nonGeographicDataset, dimensionGroup, feature, featureType, propertyType, fieldSession, software, service

Hierarchy Level Name: dataset

Turn Tooltips Off | < Back | Next > | Finish | Cancel



Please proceed to the next presentation...

Creating Metadata with the ANZMet Lite metadata entry tool