

ANZLIC Spatial Resource Discovery and Access Program

- Publishing your Metadata -

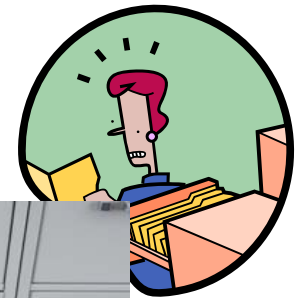
This is a very brief outline of how to publish your metadata records to an external repository.

This will not tell you how to publish your metadata records internal to your organisation.



You have created your metadata – what happens now?

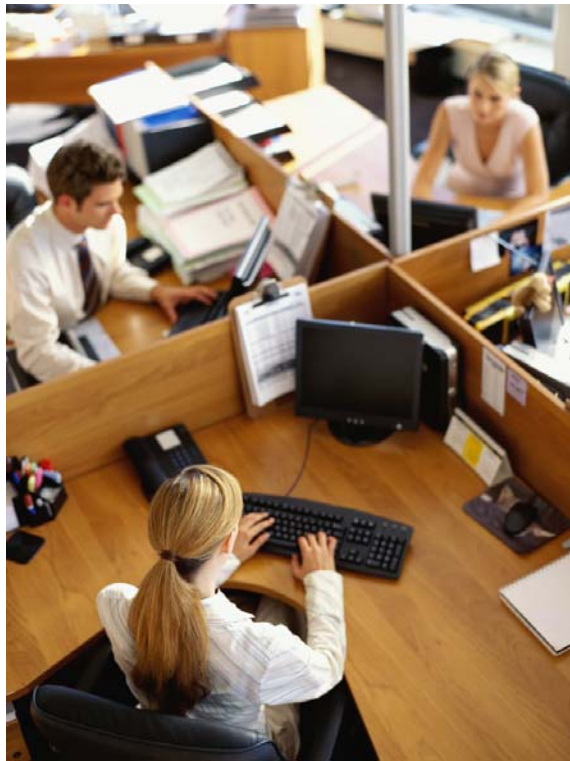
Abstract: The 2001/02 Land Use of Australia, Version 3, is part of a series of land use maps of Australia for the years 2001/02 and 2006/07. The maps are based on existing digital maps covering four themes: protected areas, topographic features, protected areas and forest themes. The agricultural land uses are based on the Australian Bureau of Statistics (ABS) 2001/02 Agricultural Land Use Survey. The distribution of agricultural land uses is interpretive and has been determined by the Australian Bureau of Statistics. The maps are supplied as a set of ARC/INFO (Trademark) grids with geographic coordinates. There is one grid for each agricultural land use and a single summary map showing the distribution of all agricultural land uses. The land uses in the summary map were determined from the probability maps. The maps are floating point grids with cell value between 0 and 1 and no value attribute. The maps also include information on irrigation status and land use according to the Australian Land Use Classification (ALUC) 2001/02. The maps should note the caveats and additional metadata, which are included in the 2001/02 Land Use of Australia, Version 3 (BRS, 2006c). The caveats are also available as a separate document (BRS, 2006a).





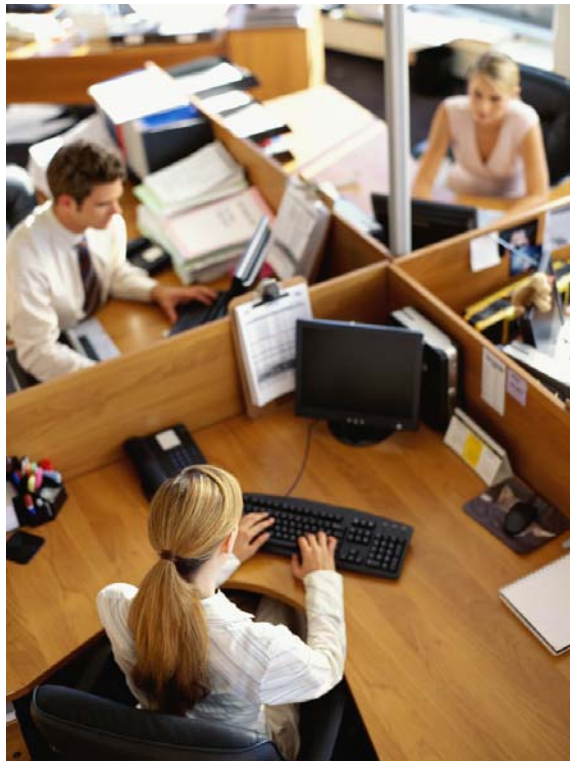
ANZLIC
the Spatial Information Council

Ideally you want other people to find your spatial resource / data





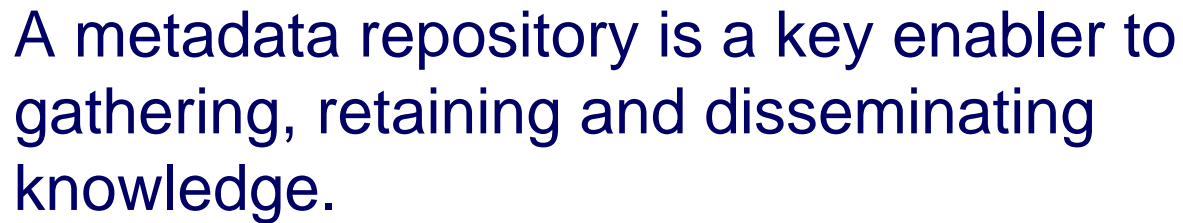
Ideally you want other people to find your spatial resource / data



Create once



A white piggy bank is shown from a side profile, facing right. A coin is suspended in the air, just above the slot on its back, as if it has just been dropped or is about to fall in. The background is a soft, out-of-focus gradient of light and dark grey.



- place to view ANZLIC-compliant **metadata**
- searching mechanism for **metadata**

IT DOES NOT HOLD YOUR RESOURCE!

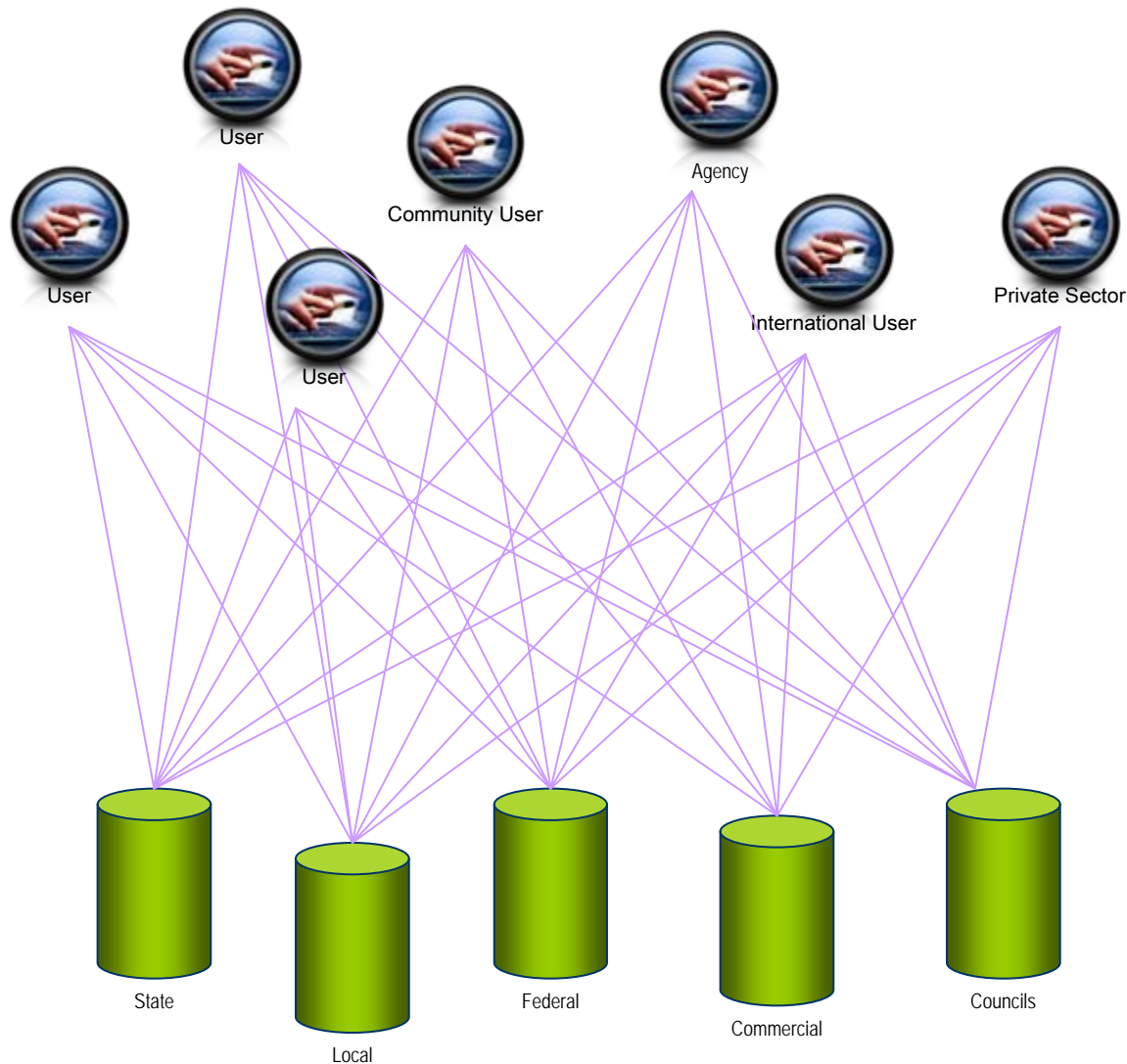
Metadata should be readily discoverable

- even if the resource is restricted.



ANZLIC
the Spatial Information Council

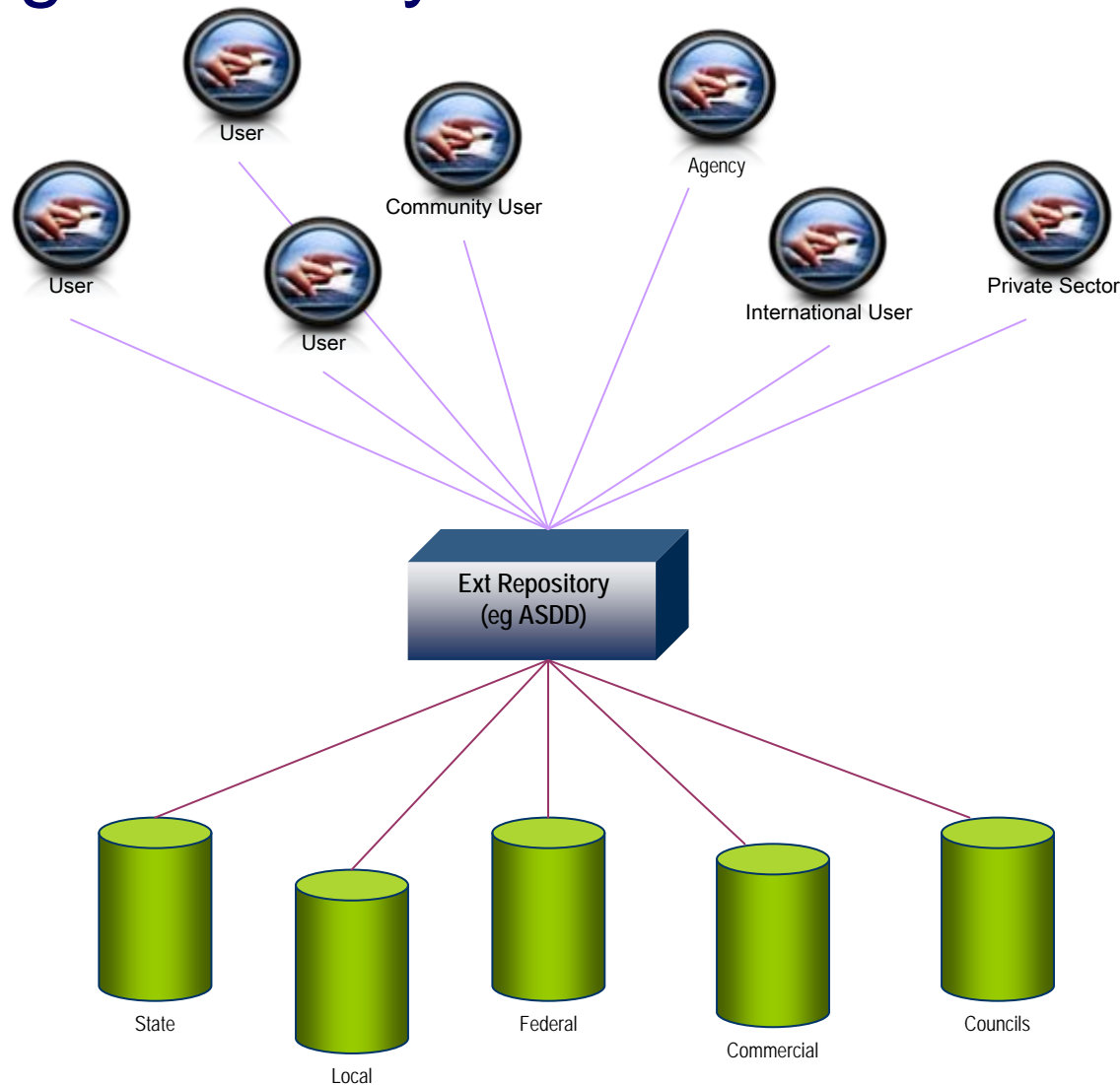
Enabling access – but not always discovery





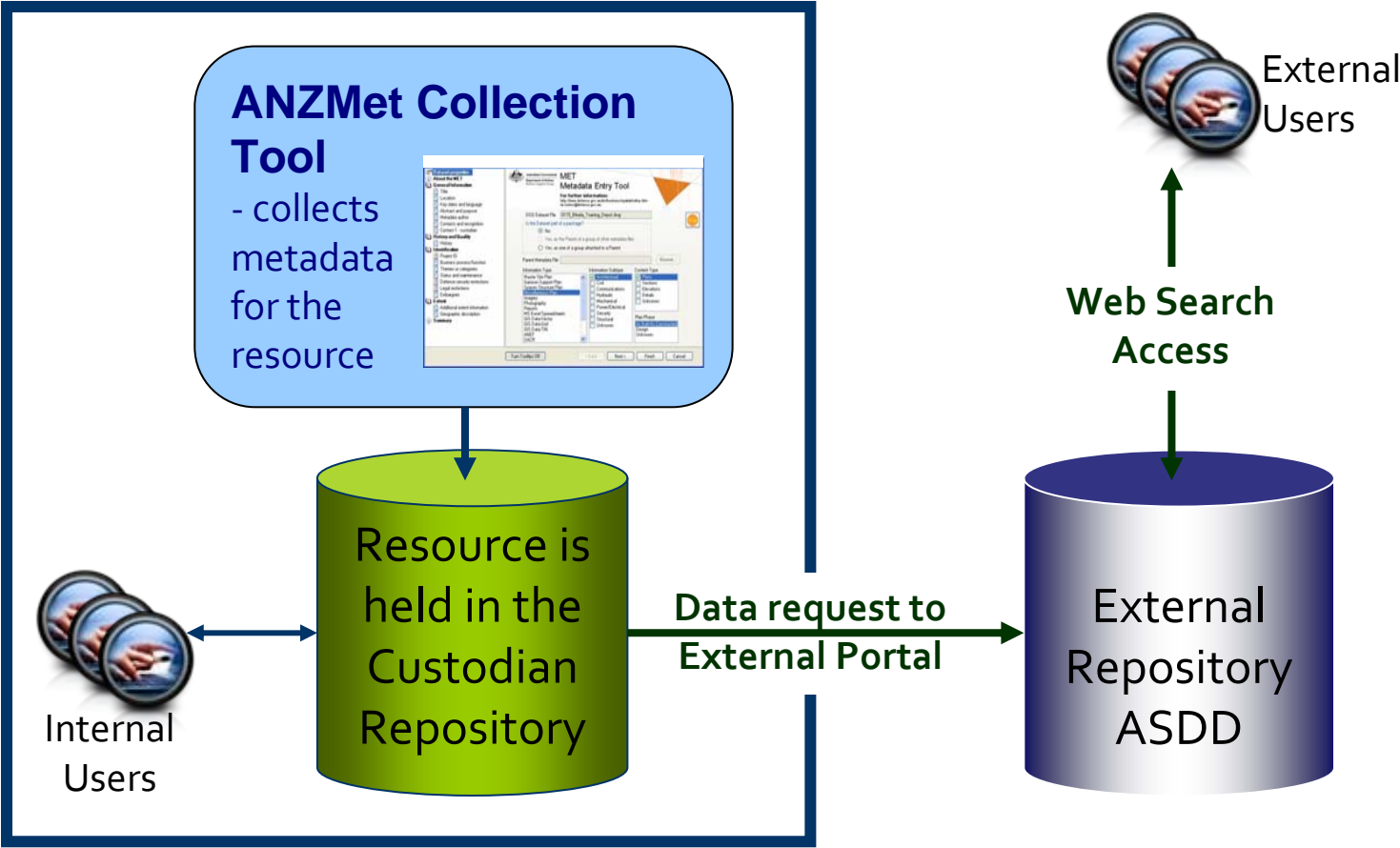
ANZLIC
the Spatial Information Council

Enabling discovery and access





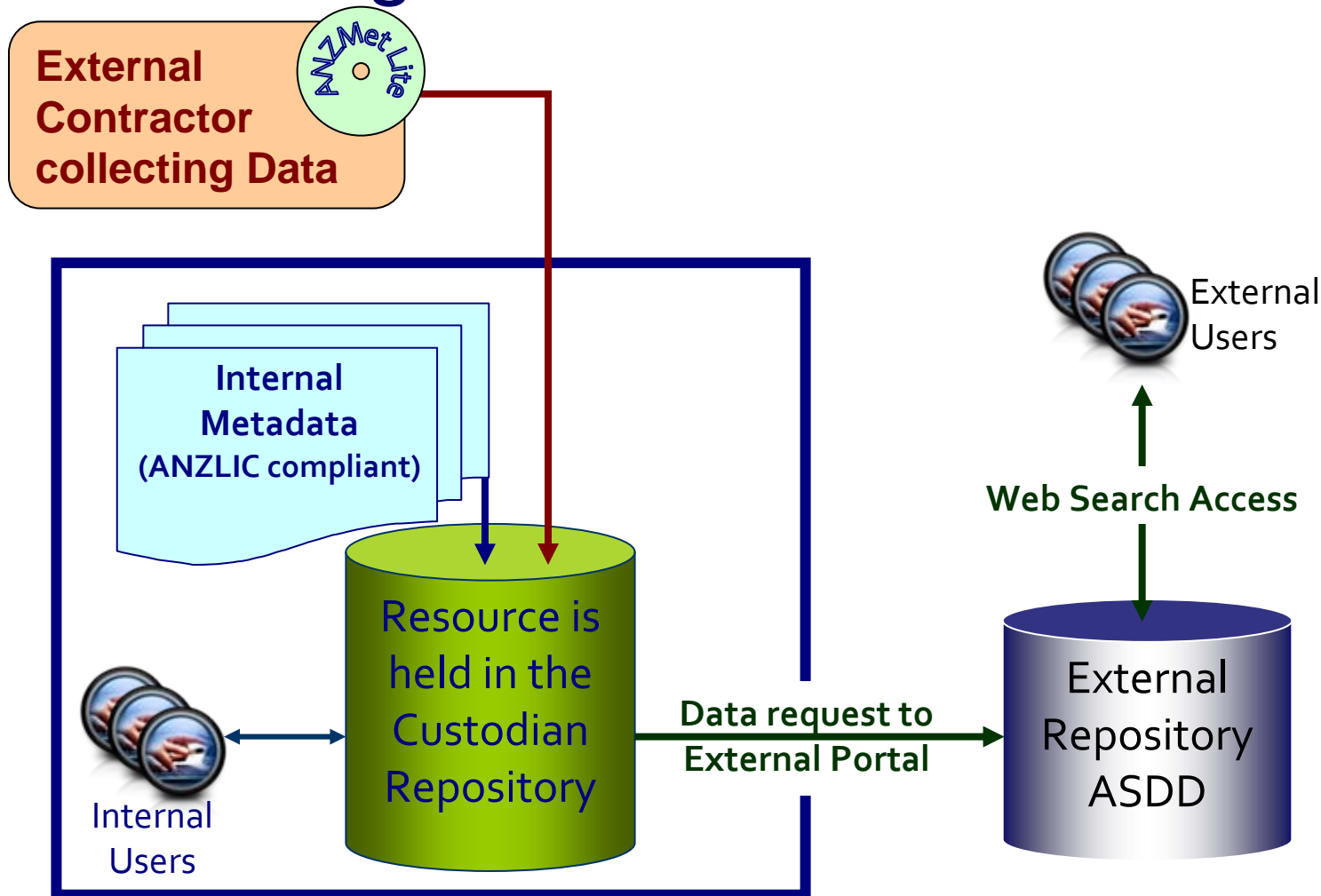
For Your Organisation

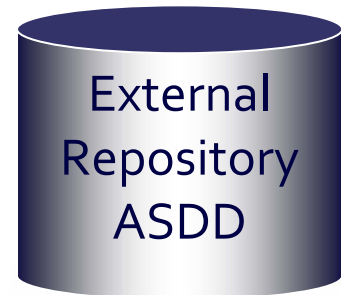




ANZLIC
the Spatial Information Council

For Your Organisation II





For example:

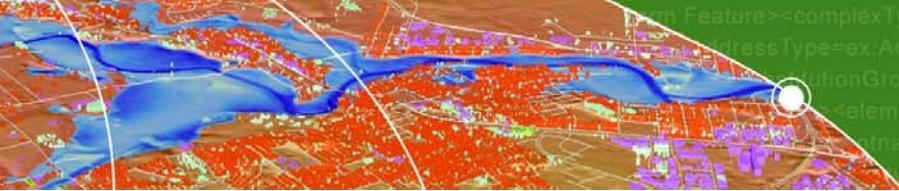
The Australian Spatial Data Directory

- Is a national initiative
- Provides a search interface to find resource descriptions (metadata).

Nodes (metadata repositories) are implemented by State/Territory jurisdictions, Australian Government agencies and commercial organisations.



ANZLIC
the Spatial Information Council



ANZLIC
the Spatial Information Council

“But I only have 25 metadata records”

File identifier: http://adl.brs.gov.au/findit/metadata_files/pa_luav3r9eg_00112a06.xml

File identifier: http://adl.brs.gov.au/findit/metadata_files/pa_luav3r9eg_00112a06.xml

File identifier: http://adl.brs.gov.au/findit/metadata_files/pa_luav3r9eg_00112a06.xml

Identifier of the parent record: http://adl.brs.gov.au/findit/metadata_files/pa_luav3r9eg_00112a00.xml

URI for product access: http://baldric.brs.gov.au/corporate/public/data/luav3r9eg_001

Product type is: dataset

Product type description is: dataset - Spatial data layer - DAFFBRSManaged

Resource Identifier: ID01

Title:
Land Use of Australia, Version 3 - 2001/2002

Edition Name: 1 Edition date: 20060921

Abstract:
The 2001/02 Land Use of Australia, Version 3, is part of a series of land use maps of Australia for the years land uses are based on existing digital maps covering four themes: protected areas, topographic features, protected areas and forest themes. The agricultural land uses are based on the Australian Bureau of Statistics distribution of agricultural land uses is interpretive and has been determined using Advanced Very High Resolution maps are supplied as a set of ARC/INFO (Trademark) grids with geographical coordinates referred to GDA94 one for each agricultural land use and a single summary map showing the non-agricultural land uses and a list of land uses in the summary map was determined from the probability maps using some simple rules to make are floating point grids with cell value between 0 and 1 and no value attribute table while the summary map is group, irrigation status and land use according to the Australian Land Use and Management Classification (ALU) should note the caveats and additional metadata, which are included in the document entitled 'User Guide to Australia, Version 3' (BRS, 2006c). The caveats are also available as a separate document entitled 'Caveats to Version 3' (BRS, 2006a).

Approach your jurisdictional metadata coordinator to determine if there is a local node of the ASDD to publish your records.

If no jurisdictional node exists, OSDM has arranged for temporary storage to be made available on the Australian Government ASDD node.



ANZLIC
the Spatial Information Council

ANZLIC – the Spatial Information Council is the peak intergovernmental organisation providing leadership in the collection, management and use of spatial information in Australia and New Zealand.

[Home](#) | [Contact us](#) | [Site map](#) | [Site search](#) | [Glossary](#)

About ANZLIC

[Homepage](#)
[About us](#)
[Current News](#)
[Publications](#)
[Policies & guidelines](#)

Spatial information

[Industry](#)
[Infrastructure](#)
[Current topics](#)
[Examples](#)
[Links](#)

ANZLIC only

[Extranet](#)

The Council's vision is that Australia's and New Zealand's economic growth, and social and environmental interests are underpinned by spatially referenced information that is current, complete, accurate, affordable, accessible and integratable.

ANZLIC's role is to facilitate easy and cost effective access to the wealth of spatial data and services provided by a wide range of organisations in the public and private sectors.

Latest Spatial Information News

[ANZMet Lite metadata entry tool \(version 1.0\) »](#)

The ANZMet Lite metadata entry tool is now available to the spatial community for use.

This product has been produced by the Office of Spatial Data Management on behalf of ANZLIC's Spatial Resources Discovery and Access Program Steering Committee.

[More information »](#)

[The National Address Management Framework »](#)

The National Address Management Framework (NAMF) was endorsed by the Ministerial Online and Communications Council on 12 December 2008 and is now available.

The National Address Management Framework (NAMF) is a national, coordinated approach to address management using a consistent, standards-based framework which will guide the process for verifying addresses and provide a standard for exchange of address data.

[More about spatial information in your jurisdiction ...](#)

[Australia](#) | [New Zealand](#) | [ACT](#) | [NSW](#) | [NT](#) | [Qld](#) | [SA](#) | [Tas](#) | [Vic](#) | [WA](#)



ASDI QUICK REFERENCE

[a short cut to the ASDI, standards, metadata & more ...](#)



ANZLIC
the Spatial Information Council

Your jurisdictional metadata coordinator can be identified by selecting the 'Contact us' tab on the ANZLIC home page www.anzlic.org.au



My Jurisdiction does not have an ASDD node. What do I do now?

ANZLIC and OSDM have arranged with Geoscience Australia to temporarily host a few jurisdictional metadata records created using ANZMet Lite on the Australian Government node of the ASDD.

Once you have created your records, contact
info@osdm.gov.au

to discuss how many records there are
and how best to publish them.



My organisation wants to publish the metadata internally. What do I do now?

A metadata collection can be published to the Internet via:

- website catalogue
- web accessible folder (waf)
- Z39.50 metadata clearinghouse – eg ASDD
- metadata service
- geospatial data portal

You would need to approach your website manager to discuss how best to publish the metadata. A style sheet will be available from the ANZLIC website so that you can view the xml independently of the ANZMet Lite tool.



ANZLIC
the Spatial Information Council



ANZLIC
the Spatial Information Council

ANZLIC – the Spatial Information Council is the peak intergovernmental organisation providing leadership in the collection, management and use of spatial information in Australia and New Zealand.

[Home](#) | [Contact us](#)

[Site map](#) | [Site search](#) | [Glossary](#)

About ANZLIC

[Homepage](#)
[About us](#)
[Current News](#)
[Publications](#)
[Policies & guidelines](#)

Spatial information

[Industry](#)
[Infrastructure](#)
[Current topics](#)
[Examples](#)
[Links](#)

ANZLIC only

[Extranet](#)

The Council's vision is that Australia's and New Zealand's economic growth, and social and environmental interests are underpinned by spatially referenced information that is current, complete, accurate, affordable, accessible and integratable.

ANZLIC's role is to facilitate easy and cost effective access to the wealth of spatial data and services provided by a wide range of organisations in the public and private sectors.

Latest Spatial Information News

[ANZMet Lite metadata entry tool \(version 1.0\) »](#)

[more about spatial information in your jurisdiction ...](#)

The ANZMet Lite metadata entry tool is now available to the spatial community for use.

This product has been produced by the Office of Spatial Data Management on behalf of ANZLIC's Spatial Resources Discovery and Access Program Steering Committee.

[More information »](#)

The National Address Management Framework »

The National Address Management Framework (NAMF) was endorsed by the Ministerial Online and Communications Council on 12 December 2008 and is now available.

The National Address Management Framework (NAMF) is a national, coordinated approach to address management using a consistent, standards-based framework which will guide the process for verifying addresses and provide a standard for exchange of address data.

[Australia](#) | [New Zealand](#) | [ACT](#) | [NSW](#) | [NT](#) | [Qld](#) | [SA](#) | [Tas](#) | [Vic](#) | [WA](#)



ASDI QUICK REFERENCE

a short cut to the ASDI, standards, metadata & more ...



The ANZLIC home page also has a link to ANZMet Lite and the associated documentation...

..and to information about where metadata sits in the wider Spatial Data Infrastructure.



ANZLIC
the Spatial Information Council

Questions?

Contact: info@anzlic.org.au



ANZLIC
the Spatial Information Council

Thank you